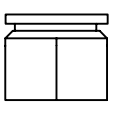
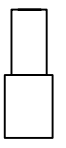


CONNECTOR BILL OF MATERIALS

CABLE STRIPPING & CONNECTOR ASSEMBLY



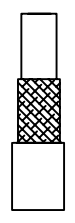
COUPLING NUT ASSY



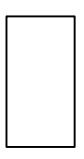
SLIDE REAR CLAMP BODY ONTO CABLE  
STRIP CABLE DOWN TO DIELECTRIC



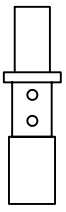
MID BODY



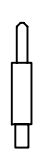
STRIP CABLE DOWN TO OUTER  
SHIELD



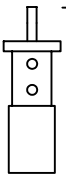
FORWARD INSULATOR



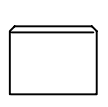
SLIDE CABLE FERRULE OVER  
SHIELD, USE A THIN RUBBER BAND  
WRAPPED AROUND SHIELD TO  
HOLD WIRES IN PLACE.



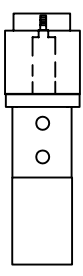
MALE SC PIN



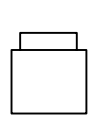
TRIM DIELECTRIC FLUSH TO THE  
FACE OF THE CABLE FERRULE &  
CUT CENTER CONDUCTOR TO LENGTH



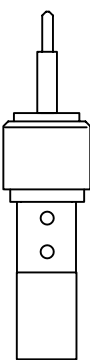
DIELECTRIC RING



INSTALL CENTER CONTACT OVER CENTER CONDUCTOR  
& SOLDER. SLIDE REAR INSULATOR OVER CONTACT



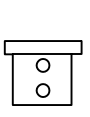
REAR INSULATOR



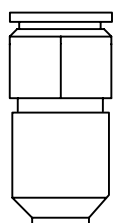
INSTALL DIELECTRIC RING OVER REAR INSULATOR  
THREAD MALE SC PIN INTO CONTACT, USE LOCKTITE 272



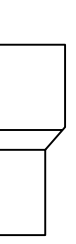
CENTER CONDUCTOR CONTACT



CABLE FERRULE



INSTALL FORWARD INSULATOR OVER MALE PIN



REAR CLAMP BODY

INSTALL MID BODY INTO COUPLING NUT ASSEMBLY  
SLIDE REAR CLAMP BODY FORWARD AND THREAD  
MID BODY TO REAR CLAMP BODY, TORQUE TO 30 IN/LBS



MATERIAL	TREATMENT	DRAWN	ACAD	DATE	9/9/02
FINISH	MOD. NO.	CHECKED	MAB	DATE	3/30/05
CONNECTOR/CABLE ASSEMBLY SCM-300		APPROVED		DATE	
CAGE CODE: ORBN4		DO NOT SCALE DWG			

ADVANCED TECHNICAL MATERIALS, INC.  
49 RIDER AVE., PATCHOQUE N.Y. 11772  
TEL: (631) 289-0366 FAX: (631) 289-0358  
<http://www.dtrmnicovve.com>



UNLESS OTHERWISE NOTED, DIMENSIONS ARE IN INCHES. TOLERANCES ARE:

FRACCTIONS	DECIMALS	ANGLES
±1/64	±.01	±1/2°
TOLERANCES ARE:		
SCALE	DWG. NO.	REV.
	6674	A

CABLE ASSEMBLY  
NOTE: NO EXCESS SOLDER SHOULD BE EXPOSED ON THE CABLE FERRULE, OR THE CONNECTOR PIN. THIS COULD EFFECT ELECTRICAL PERFORMANCE, OR MECHANICAL ASSEMBLY.